



Rat CRP ELISA Kit

Vertrieb:

L O X O GmbH Immunbiologie Biochemie, Produkte und Systeme
Postfach 11 30 69215 Dossenheim
Telefon +49 (0) 62 21 - 86 80 23 **FAX** +49 (0) 62 21 - 86 80 255
E-Mail: info@loxo.de **Internet:** www.loxo.de

Assaypro LLC
30 Triad South Drive
St. Charles, MO 63304
T (636) 447-9175
F (636) 447-9475
www.assaypro.com

Hinweis/Note:

Der Packungsbeileger dient nur als erste Information.
Der relevante Packungsbeileger liegt der Ware bei.

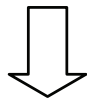
The datasheet is only a first information.
The relevant datasheet is included with the product.

For any questions regarding troubleshooting or performing the assay, please contact our support team at support@assaypro.com.

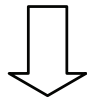
Thank you for choosing Assaypro.

Assay Summary

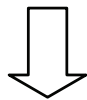
Add 50 μ l of Standard/ Sample per well.
Incubate 2 hours.



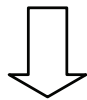
Wash, then add 50 μ l of
Biotinylated Antibody per well.
Incubate 1 hour.



Wash, then add 50 μ l of
SP Conjugate per well.
Incubate 30 minutes.



Wash, then add 50 μ l of
Chromogen Substrate per well.
Incubate 20 minutes.



Add 50 μ l of Stop Solution per well.
Read at 450 nm immediately.

AssayMax Rat C-Reactive Protein (CRP) ELISA Kit

Catalog No. ERC1001-1
Sample Insert/Reference Only

Introduction

C-Reactive Protein (CRP) is a liver protein composed of five identical non-glycosylated subunits, with a total molecular weight of 105 kDa. CRP has a variety of powerful effects related to immunology, inflammation, and coagulation. As a marker of low-level inflammation, CRP appears to predict future cardiovascular disease events among apparently healthy individuals. High plasma concentration of CRP was associated with increased risk of stroke, myocardial infarction, and peripheral vascular disease (1-3). CRP has also been associated with increased risks of fatal coronary events among high-risk male smokers and incident coronary disease among the elderly (4, 5). Studies have established the prognostic usefulness of CRP in the setting of angina (6). Originally used as a marker of acute inflammation, CRP has become a leading candidate as the measure of choice for estimating the inflammatory component of cardiovascular disease risk.

Principle of the Assay

The AssayMax Rat C-Reactive Protein ELISA (Enzyme-Linked Immunosorbent Assay) kit is designed for detection of rat CRP in urine, plasma, serum, and cell culture supernatant samples. This assay employs a quantitative sandwich enzyme immunoassay technique that measures rat CRP in less than 4 hours. A polyclonal antibody specific for rat CRP has been pre-coated onto a 96-well microplate with removable strips. Rat CRP in standards and samples is sandwiched by the immobilized antibody and biotinylated polyclonal antibody specific for rat CRP, which is recognized by a streptavidin-peroxidase conjugate. All unbound material is then washed away and a peroxidase enzyme substrate is added. The color development is stopped and the intensity of the color is measured.

Caution and Warning

- **Prepare all reagents (working diluent buffer, wash buffer, standards, biotinylated antibody, and SP conjugate) as instructed, prior to running the assay.**

- **Prepare all samples prior to running the assay. The dilution factors for the samples are suggested in this protocol. However, the user should determine the optimal dilution factor.**
- **Spin down the SP conjugate vial and the biotinylated antibody vial before opening and using contents.**
- This kit is for research use only.
- The kit should not be used beyond the expiration date.
- The Stop Solution is an acidic solution.

Reagents

- **Rat CRP Microplate:** A 96-well polystyrene microplate (12 strips of 8 wells) coated with a polyclonal antibody against rat CRP.
- **Sealing Tapes:** Each kit contains 3 precut, pressure sensitive sealing tapes that can be cut to fit the format of the individual assay.
- **Rat CRP Standard:** Rat CRP in a buffered protein base (150 ng, lyophilized).
- **Biotinylated Rat CRP Antibody (50x):** A 50-fold biotinylated polyclonal antibody against rat CRP (140 μ l).
- **EIA Diluent Concentrate (10x):** A 10-fold concentrated buffered protein base (30 ml).
- **Wash Buffer Concentrate (20x):** A 20-fold concentrated buffered surfactant (30 ml, 2 bottles).
- **Streptavidin-Peroxidase Conjugate (SP Conjugate):** A 100-fold concentrate (80 μ l).
- **Chromogen Substrate:** A ready-to-use stabilized peroxidase chromogen substrate tetramethylbenzidine (8 ml).
- **Stop Solution:** A 0.5 N hydrochloric acid to stop the chromogen substrate reaction (12 ml).

Storage Condition

- Upon arrival, immediately store components of the kit at recommended temperatures up to the expiration date.
- Store SP Conjugate and Biotinylated Antibody at -20°C.
- Store Microplate, Diluent Concentrate (10x), Wash Buffer, Stop Solution, and Chromogen Substrate at 2-8°C.
- Unused microplate wells may be returned to the foil pouch with the desiccant packs and resealed. May be stored for up to 30 days in a vacuum desiccator.
- Diluent (1x) may be stored for up to 30 days at 2-8°C.
- Store Standard at 2-8°C before reconstituting with diluent and at -20°C after reconstituting with diluent.

Other Supplies Required

- Microplate reader capable of measuring absorbance at 450 nm.
- Pipettes (1-20 μ l, 20-200 μ l, 200-1000 μ l, and multiple channel pipette).
- Deionized or distilled reagent grade water.

Sample Collection and Storage

- **Plasma:** Collect plasma using one-tenth volume of 0.1 M sodium citrate as an anticoagulant. Centrifuge samples at 3000 x *g* for 10 minutes and use supernatants. Dilute samples 1:60000 with EIA Diluent and assay. The undiluted samples can be stored at -20°C or below for up to 3 months. Avoid repeated freeze-thaw cycles (EDTA or Heparin can also be used as an anticoagulant).
- **Serum:** Samples should be collected into a serum separator tube. After clot formation, centrifuge samples at 3000 x *g* for 10 minutes and remove serum. Dilute samples 1:60000 into EIA Diluent and assay. The undiluted samples can be stored at -20°C or below for up to 3 months. Avoid repeated freeze-thaw cycles.
- **Urine:** Collect urine using sample pot. Centrifuge samples at 800 x *g* for 10 minutes. Dilute samples 1:4 into EIA Diluent or within the range of 1:2 to 1:20, and assay. The undiluted samples can be stored at -20°C or below for up to 3 months. Avoid repeated freeze-thaw cycles.
- **Cell Culture Supernatants:** Centrifuge cell culture media at 3000 x *g* for 10 minutes to remove debris. Collect supernatants and assay. The samples can be stored at -20°C or below. Avoid repeated freeze-thaw cycles.

Reagent Preparation

- Freshly dilute all reagents and bring all reagents to room temperature before use.
- **EIA Diluent Concentrate (10x):** If crystals have formed in the concentrate, mix gently until the crystals have completely dissolved. Dilute the EIA Diluent Concentrate 1:10 with reagent grade water. Store for up to 30 days at 2-8°C.
- **Rat CRP Standard:** Reconstitute the 150 ng of Rat CRP Standard with 3 ml of EIA Diluent to generate a 50 ng/ml standard solution. Allow the standard to sit for 10 minutes with gentle agitation prior to making dilutions. Prepare duplicate or triplicate standard points by serially diluting the standard solution (50 ng/ml) 1:2 with equal volume of EIA Diluent to produce 25, 12.5, 6.25, 3.125, 1.563, and 0.781 ng/ml solutions. EIA Diluent serves as the zero standard (0 ng/ml). Any remaining solution should be frozen at -20°C and used within 30 days.

Standard Point	Dilution	[Rat CRP] (ng/ml)
P1	Standard (50 ng/ml)	50.00
P2	1 part P1 + 1 part EIA Diluent	25.00
P3	1 part P2 + 1 part EIA Diluent	12.50
P4	1 part P3 + 1 part EIA Diluent	6.250
P5	1 part P4 + 1 part EIA Diluent	3.125
P6	1 part P5 + 1 part EIA Diluent	1.563
P7	1 part P6 + 1 part EIA Diluent	0.781
P8	EIA Diluent	0.000

- **Biotinylated Rat CRP Antibody (50x):** Spin down the antibody briefly and dilute the desired amount of the antibody 1:50 with EIA Diluent. Any remaining solution should be frozen at -20°C.
- **Wash Buffer Concentrate (20x):** If crystals have formed in the concentrate, mix gently until the crystals have completely dissolved. Dilute the Wash Buffer Concentrate 1:20 with reagent grade water.
- **SP Conjugate (100x):** Spin down the SP Conjugate briefly and dilute the desired amount of the conjugate 1:100 with EIA Diluent. Any remaining solution should be frozen at -20°C.

Assay Procedure

- Prepare all reagents, working standards, and samples as instructed. Bring all reagents to room temperature before use. The assay is performed at room temperature (20-25°C).
- Remove excess microplate strips from the plate frame and return them immediately to the foil pouch with desiccants inside. Reseal the pouch securely to minimize exposure to water vapor and store in a vacuum desiccator.
- Add 50 µl of Rat CRP Standard or sample per well. Cover wells with a sealing tape and incubate for 2 hours. Start the timer after the last addition.
- Wash five times with 200 µl of Wash Buffer manually. Invert the plate each time and decant the contents; hit 4-5 times on absorbent material to completely remove the liquid. If using a machine, wash six times with 300 µl of Wash Buffer and then invert the plate, decanting the contents; hit 4-5 times on absorbent material to completely remove the liquid.
- Add 50 µl of Biotinylated Rat CRP Antibody to each well and incubate for 1 hour.
- Wash the microplate as described above.
- Add 50 µl of Streptavidin-Peroxidase Conjugate per well and incubate for 30 minutes. Turn on the microplate reader and set up the program in advance.
- Wash the microplate as described above.

- Add 50 μ l of Chromogen Substrate per well and incubate for about 20 minutes or till the optimal color density develops. Gently tap the plate to ensure thorough mixing and break the bubbles in the well with pipette tip.
- Add 50 μ l of Stop Solution to each well. The color will change from blue to yellow.
- Read the absorbance on a microplate reader at a wavelength of 450 nm **immediately**. If wavelength correction is available, subtract readings at 570 nm from those at 450 nm to correct optical imperfections. Otherwise, read the plate at 450 nm only. Please note that some unstable black particles may be generated at high concentration points after stopping the reaction for about 10 minutes, which will reduce the readings.

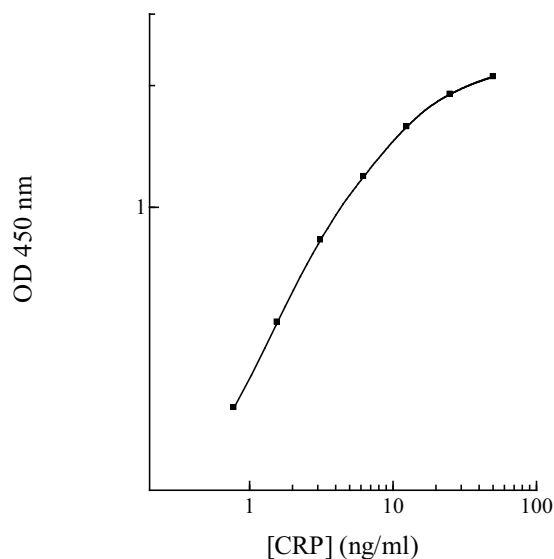
Data Analysis

- Calculate the mean value of the duplicate or triplicate readings for each standard and sample.
- To generate a standard curve, plot the graph using the standard concentrations on the x-axis and the corresponding mean 450 nm absorbance on the y-axis. The best-fit line can be determined by regression analysis using log-log or four-parameter logistic curve-fit.
- Determine the unknown sample concentration from the Standard Curve and multiply the value by the dilution factor.

Standard Curve

- The curve is provided for illustration only. A standard curve should be generated each time the assay is performed.

Rat CRP Standard Curve



Performance Characteristics

- The minimum detectable dose of rat CRP is typically ~ 0.7 ng/ml.
- Intra-assay and inter-assay coefficients of variation were 4.9% and 7.1% respectively.

Cross-Reactivity

Species	% Cross Reactivity
Beagle	None
Bovine	None
Monkey	None
Mouse	<5%
Human	None
Swine	None
Rabbit	None
Rat	100%

Linearity

	Average Percentage of Expected Value
Sample Dilution	Urine
1:2	86%
1:4	100%
1:8	105%

	Average Percentage of Expected Value	
Sample Dilution	Plasma	Serum
1:30000	91%	89%
1:60000	98%	97%
1:120000	103%	104%

Recovery

Standard Added Value	1 – 10 ng/ml
Recovery %	82 – 108%
Average Recovery %	96%

References

- (1) Ridker, P.M. *et al.* (1997) *N. Engl. J. Med.* 336: 973
- (2) Ridker, P.M. *et al.* (1998) *Circulation* 98: 731
- (3) Ridker, P.M. *et al.* (1998) *Circulation* 97: 425
- (4) Kuller, L.H. *et al.* (1996) *Am. J. Epidemiol.* 144:537
- (5) Tracy, R.P. *et al.* (1997) *Arterioscler. Thromb. Vasc. Biol.* 17:1121
- (6) Liuzzo, G. *et al.* (1994) *N. Engl. J. Med.* 331:417

Version 1.6

Related Products:

- EC1001-1 AssayMax Human C-Reactive Protein ELISA Kit (Plasma, Serum, Urine, Milk, Saliva, and Cell Culture samples)
- EMC1001-1 AssayMax Mouse C-Reactive Protein ELISA Kit (Plasma, Serum, Urine, and Cell Culture samples)